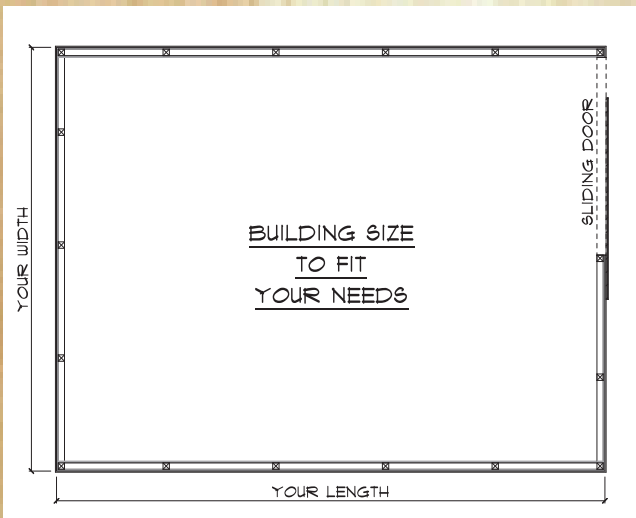


Painted Steel Pole Barns

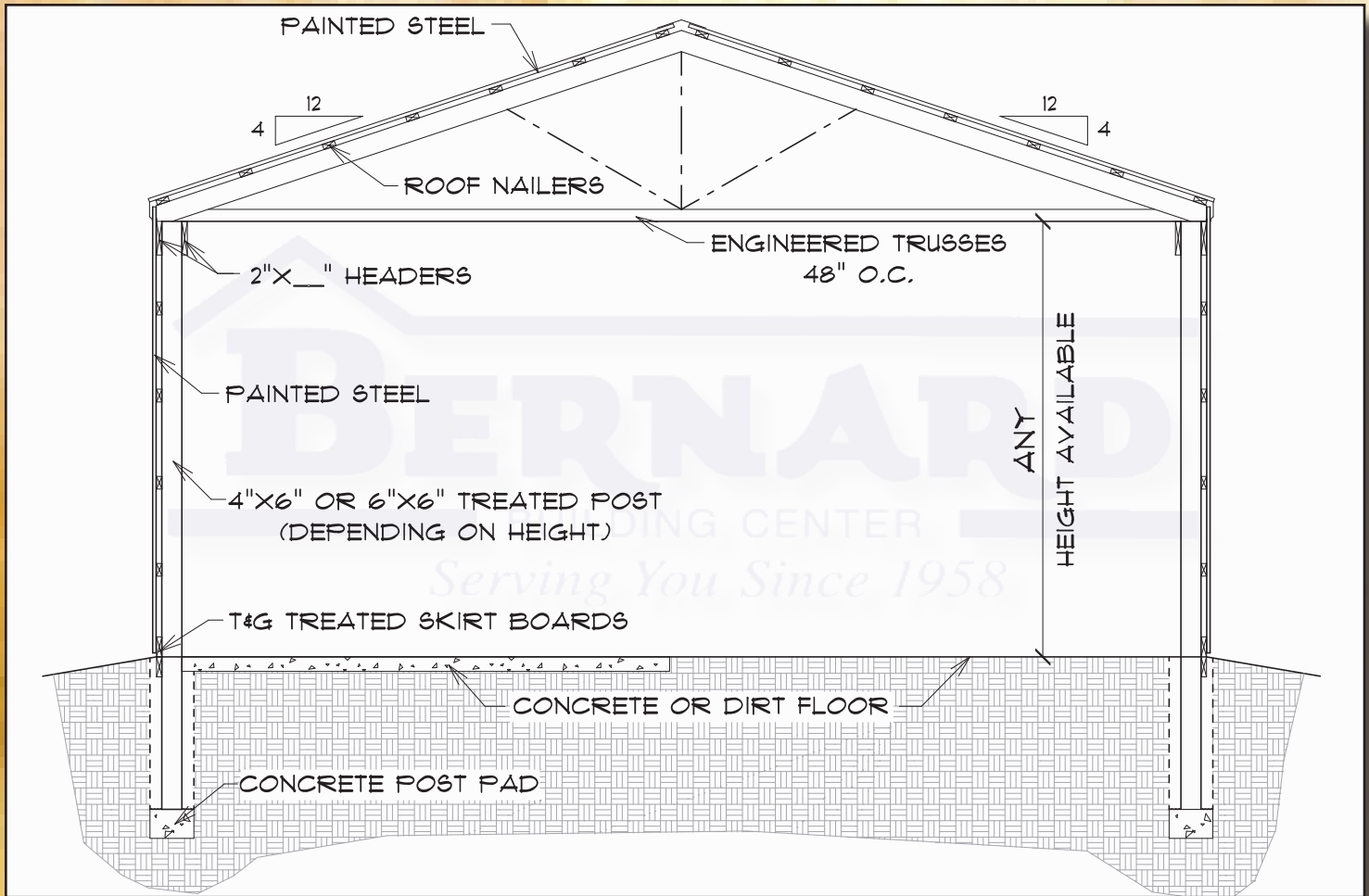


Standard Packages include:

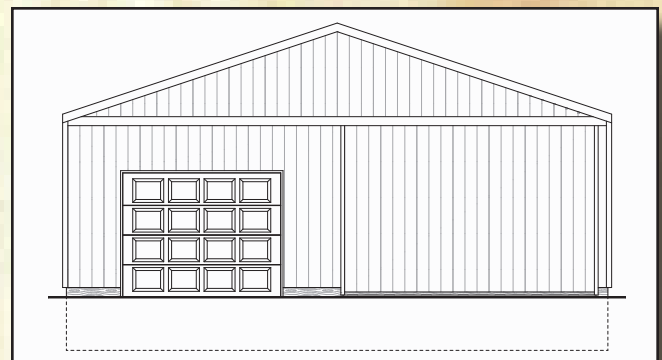
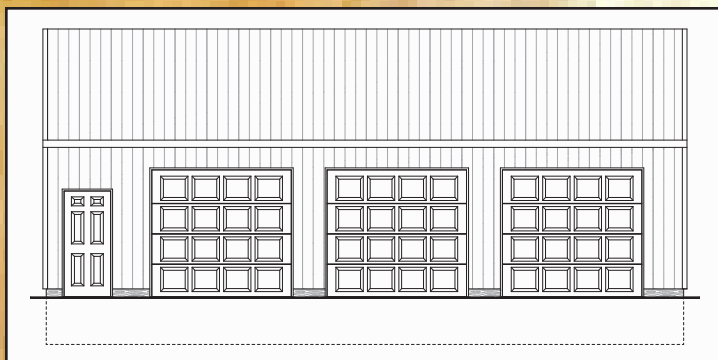
- *4"x6" or 6"x6" Treated posts
- *48"O.C. Engineered roof trusses
- *Painted Steel roof sheathing
- *Sliding door(s)
- *Trim & Nails
- *Treated skirt boards
- *Truss headers
- *Painted Steel Siding
- *Roof & wall nailers
- *Building Plans

Can be modified to fit your specifications!

If the above pole barns do not meet your needs, Bernard Building Center can help you design and build a pole barn to fit your specifications. From big to small we sell them all! When you are done with the rough-in, Bernard's has all the finish products necessary to complete your "dream garage" (insulation, drywall, electrical, plumbing, door openers, paint, light fixtures, etc.). We deliver anywhere in Michigan for a nominal fee.



Door Placement Options For Our Deluxe Pole Barn Packages



**PHOTOS and Plans of this building are for representation only. Actual package may not include variations and customizations that may be depicted in these photos.

*** Bernard Building Center strives to meet the highest building standards, due to varying soil conditions and local building codes, material lists may not meet the building requirements of your area. Materials package prices do not include labor, concrete, brick, insulation, drywall, paint or stain, electrical, heating, plumbing fixtures, cabinets, any or all materials not itemized on the Bernard Building Center material list. See your project sales representative for actual plan and package details.