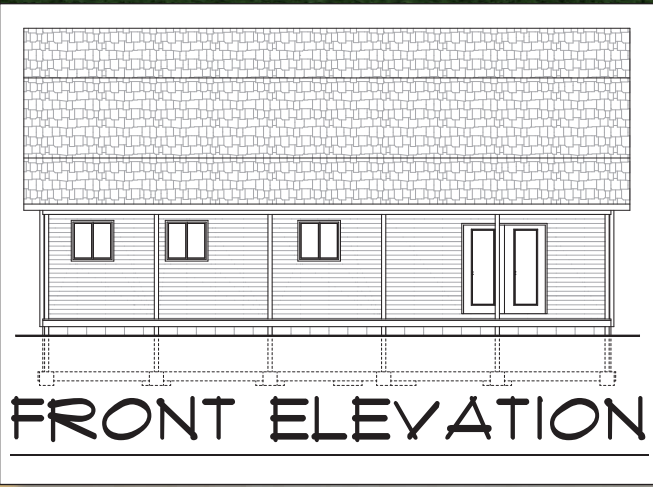


We have your  
Dream Home!



## 28'x40' Gambrel House

The 28' x40' Gambrel House is a very charming home. Enjoy yourself, or entertain your guests on the eye catching covered front porch. This package can be built on a crawl-space or basement. The dining room is open



to the kitchen and includes a patio door which opens to the covered porch. The spacious kitchen features a bar top, dishwasher, and adjacent pantry. The master bedroom includes a walk-in closet and full bath. A half bath and utility room is located adjacent to the side entry door on the main level. A full bath serves the 2nd

Building Foot Print 40'- 0" x 36'- 0"	Total 2000 Sq.Ft.	1st Floor 1120 Sq.Ft.	2nd Floor 880 Sq.Ft.
--	----------------------	--------------------------	-------------------------

Price \$ \_\_\_\_\_  
Plus sales tax & delivery

