

We have your
Dream Home!



28'x40' Cape Cod

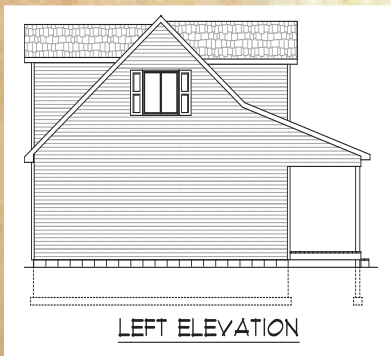
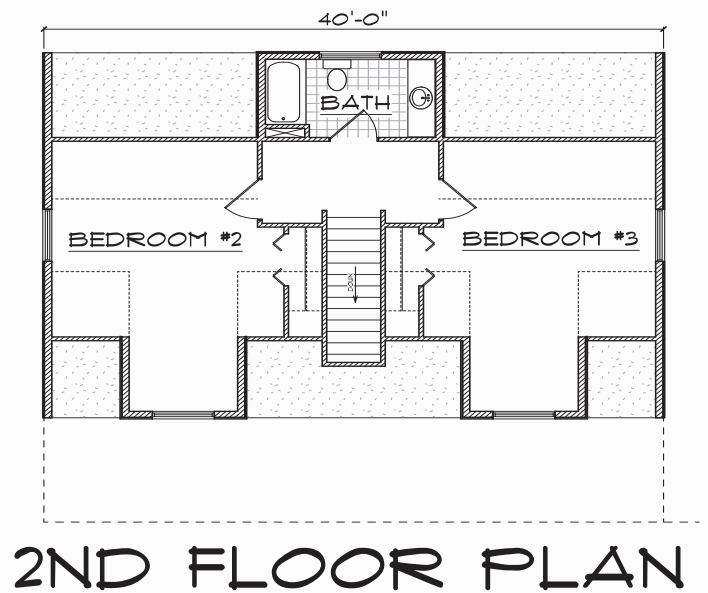
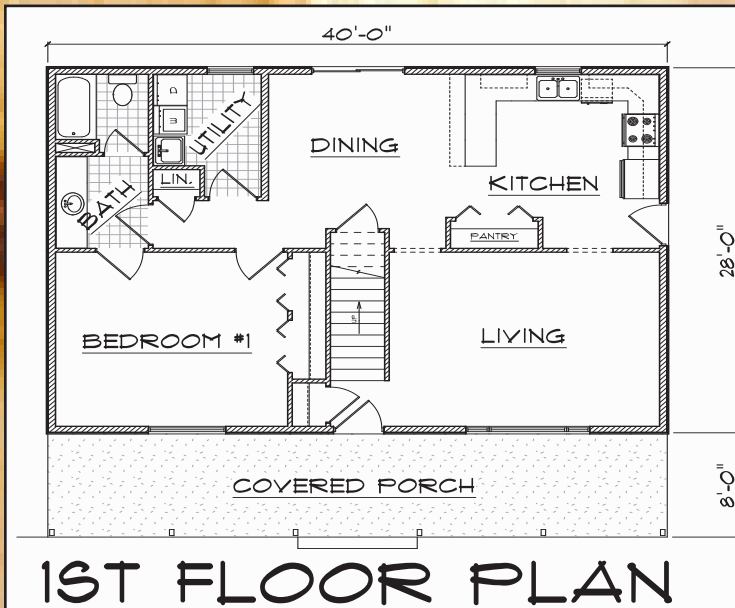
The 28'x40' Cape Cod will make for a very charming home. Enjoy yourself or entertain your guests on the eye catching covered front porch. This package can be

built on a crawlspace or basement. The kitchen features a bar top peninsula and a large pantry. The dining room is open to the kitchen and includes a patio door which opens to the rear of the home. Archways separate the living room from the dining room and kitchen. A full bath and utility room are located adjacent to the master bedroom on the main level. A full bath separates the 2nd floor bedrooms which both have views to the front and sides.

Building Foot Print	Total	1st Floor	2nd Floor
40'- 0" x 36'- 0"	1860 Sq. Ft.	1120 Sq. Ft.	740 Sq. Ft.

Price \$ _____
Plus sales tax & delivery

28'x40' Cape Cod



Bernard Building Center's 28'x40' Cape Cod house is a complete rough-in package including: wood floor system, 2"x6" exterior & 2"x4" interior walls, OSB wall sheathing, vinyl siding, vinyl windows, entry doors, roof rafters, roof sheathing, shingles, covered porch with deck, trim, nails, and building plans. This package can be modified to fit your needs. Any and all materials can be changed to the product of your choice. The size of the home can also be changed, the possibilities are endless. Changes may alter the final package price. Custom designs are also available.

When you are done with your rough-in, we have all the finish products necessary to complete your dream home, from insulation, drywall, plumbing, doors, carpeting, kitchen cabinets, paint, and light fixtures. We can save you money on your building project. We deliver anywhere in Michigan for a nominal fee.

**PHOTOS and Plans of this home are for representation only. Actual package may not include variations and customizations that may be depicted in these photos.

*** Bernard Building Center strives to meet the highest building standards, due to varying soil conditions and local building codes, material lists may not meet the building requirements of your area. Materials package prices do not include labor, concrete, brick, insulation, drywall, paint or stain, electrical, heating, plumbing fixtures, cabinets, any or all materials not itemized on the Bernard Building Center material list. See your project sales representative for actual plan and package details.